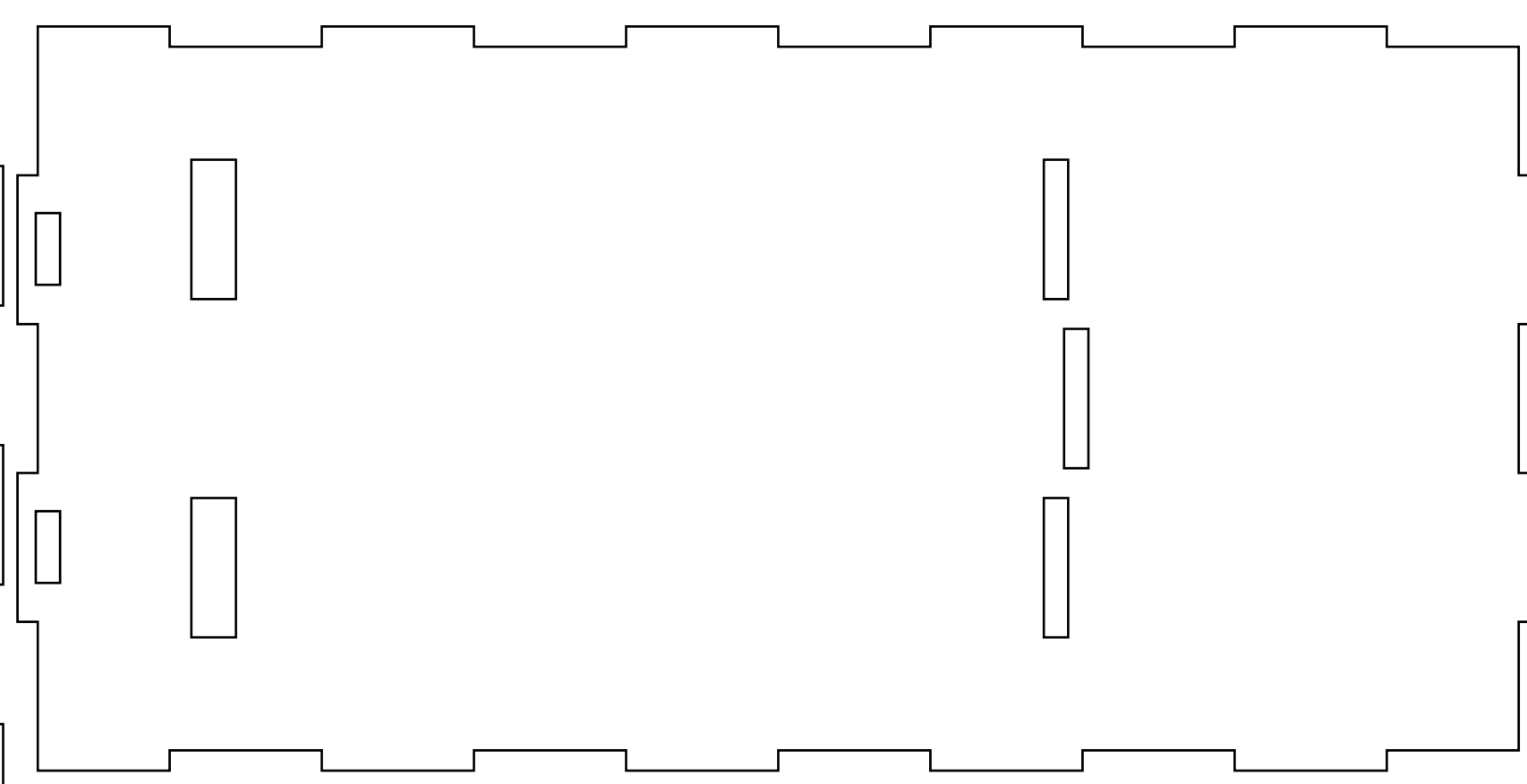


Side Wall, and the cut out in the middle becomes the bread of the IR light strips sandwich

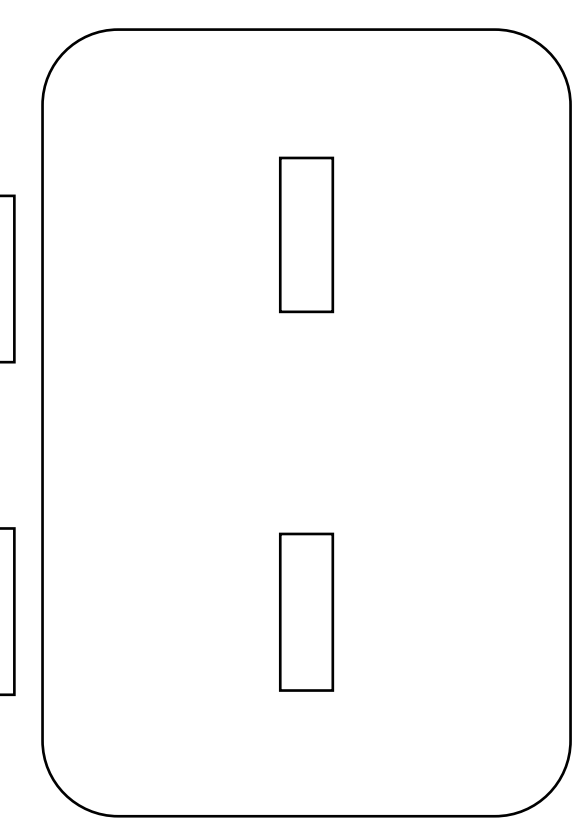
Side Wall, and the cut out in the middle becomes the bread of the IR light strips sandwich



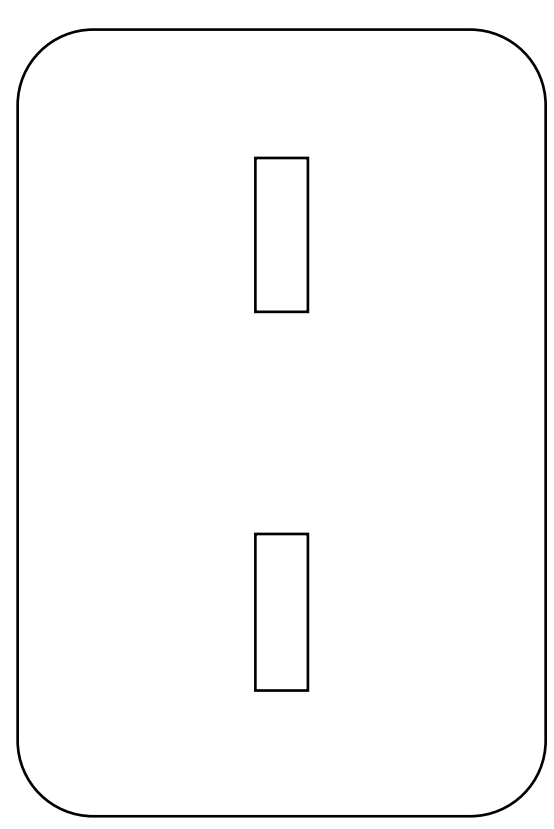
Wall behind IR light Sandwich



Bottom



Thin Plate Stand Foot



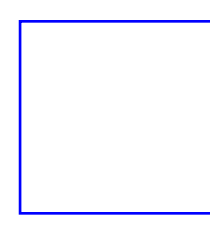
Thin Plate Stand Foot

Time-lapse seedling root camera system, designed by Kate Baldwin and Shih-Heng Su in the lab of Patrick Masson at the University of Wisconsin, Madison.

Project Information and Purchase List: K8Baldwin.com/time-lapse-seedling-camera-system

Black: Cut Through
 Red: Just mark the acrylic
 Blue: Don't laser at all

This PDF is in Inches
 This square is exactly 1in X 1in



Clear Acrylic Thin (0.118in thick)

Cast Acrylic Sheet, Clear, 24" x 24" x 0.118" Size

<http://a.co/c1LEkMI>

\$17.87

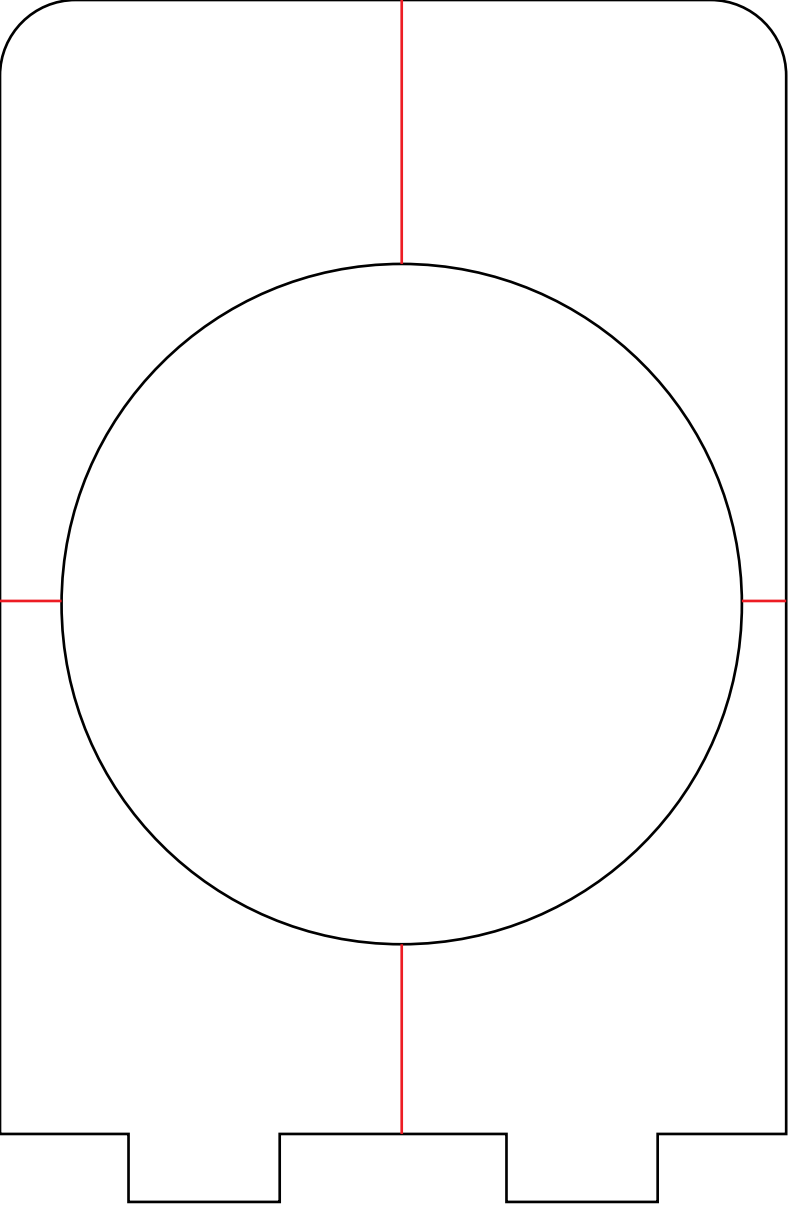
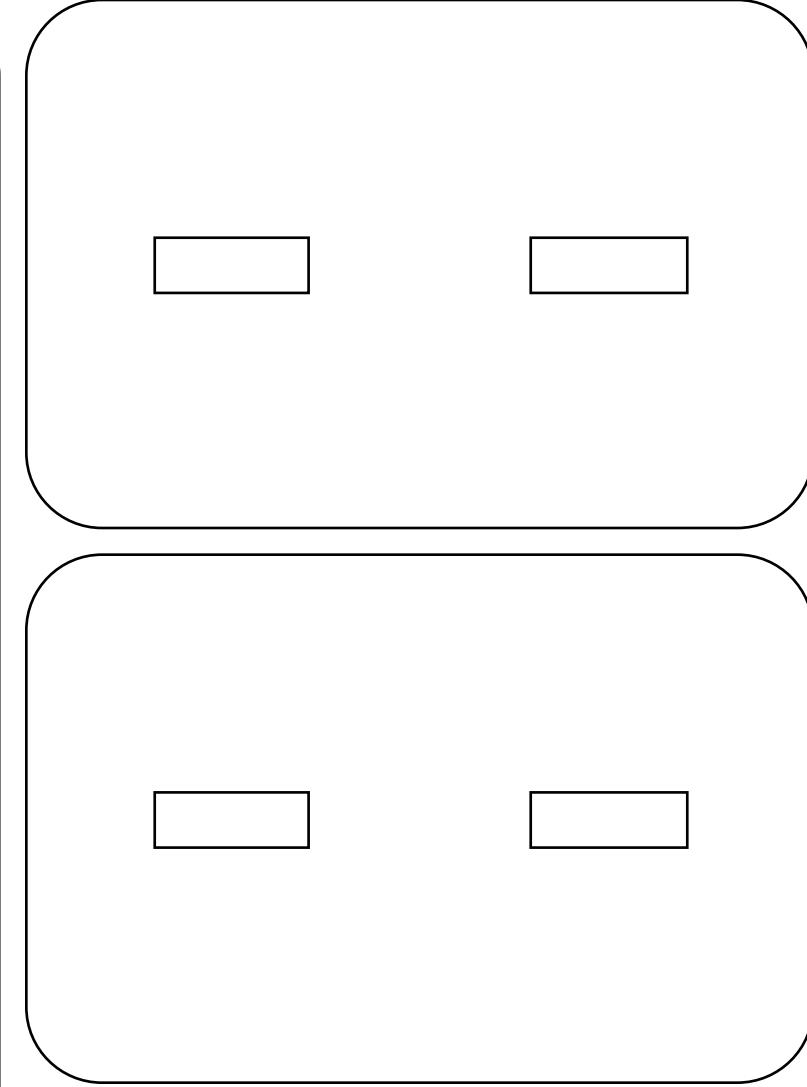
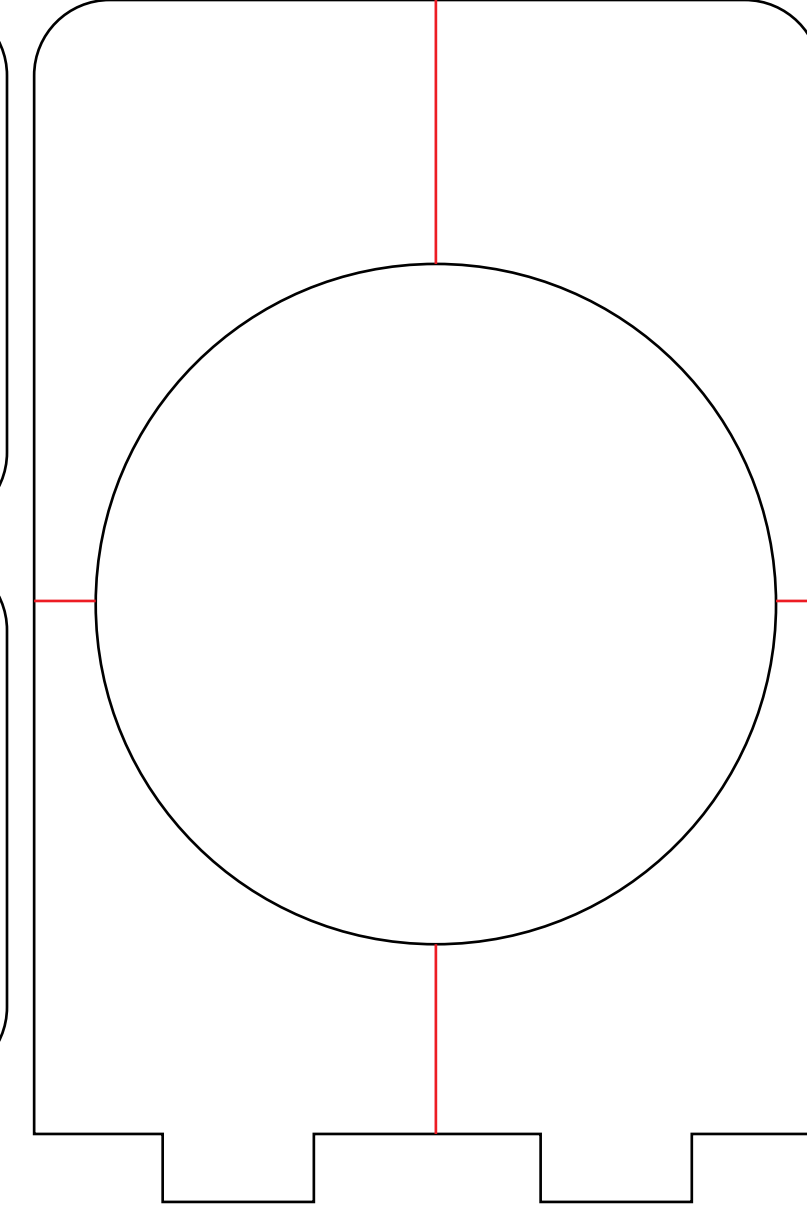


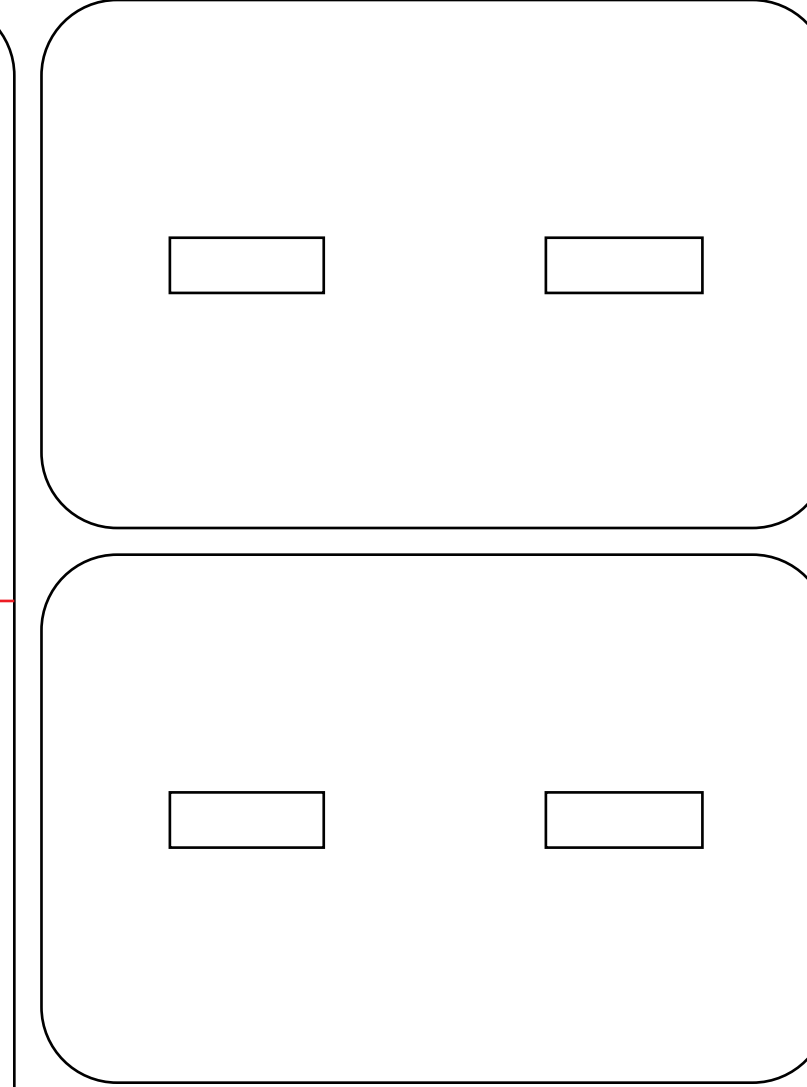
Plate Stand



Thick Plate Stand Feet
Stack 2 feet under the plate stand.
You may use 2 thick ones, or 1 thick
and 1 thin to adjust the height.



Extra Plate Stand for Germinating



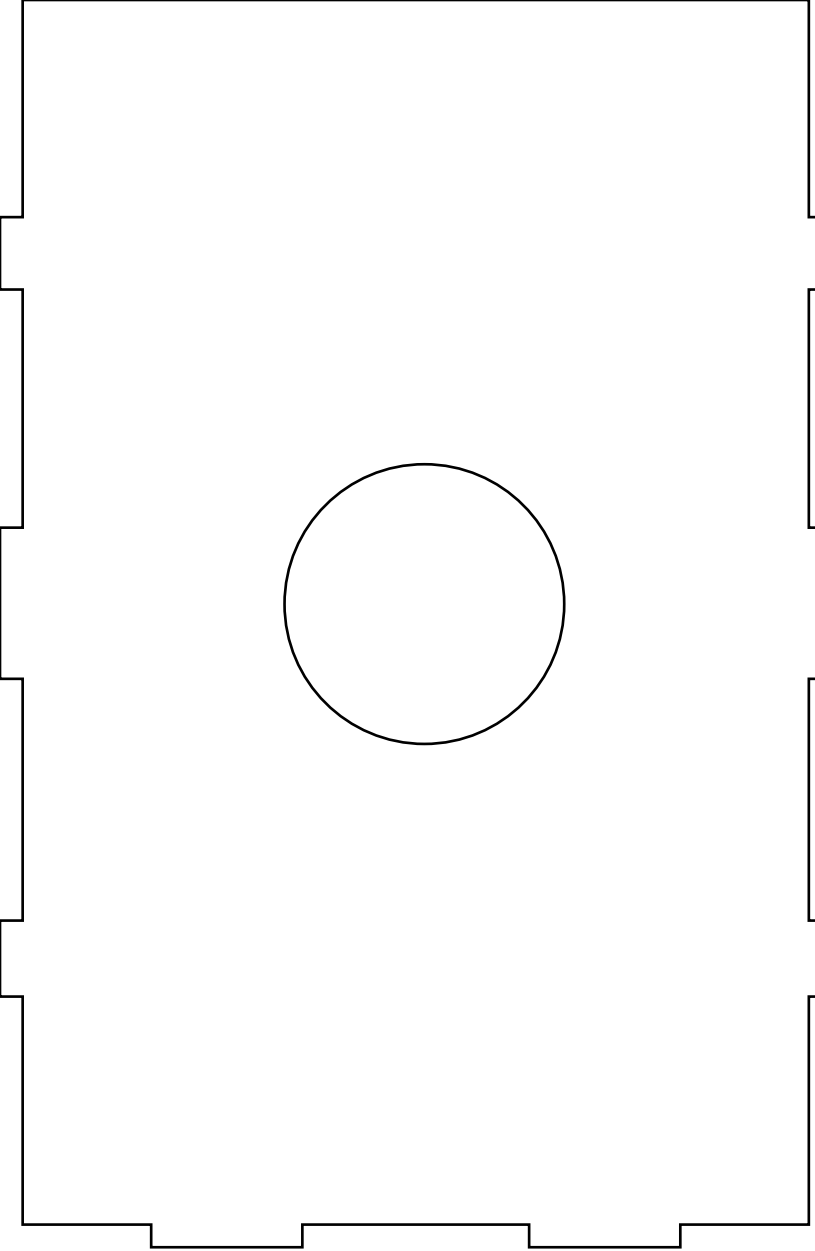
Thick Plate Stand Feet

Clear Acrylic Thick (0.236in thick)

Cast Acrylic Sheet, Clear, 12" x 24" x 0.236" Size

<http://a.co/3SjOTSR>

\$15.07



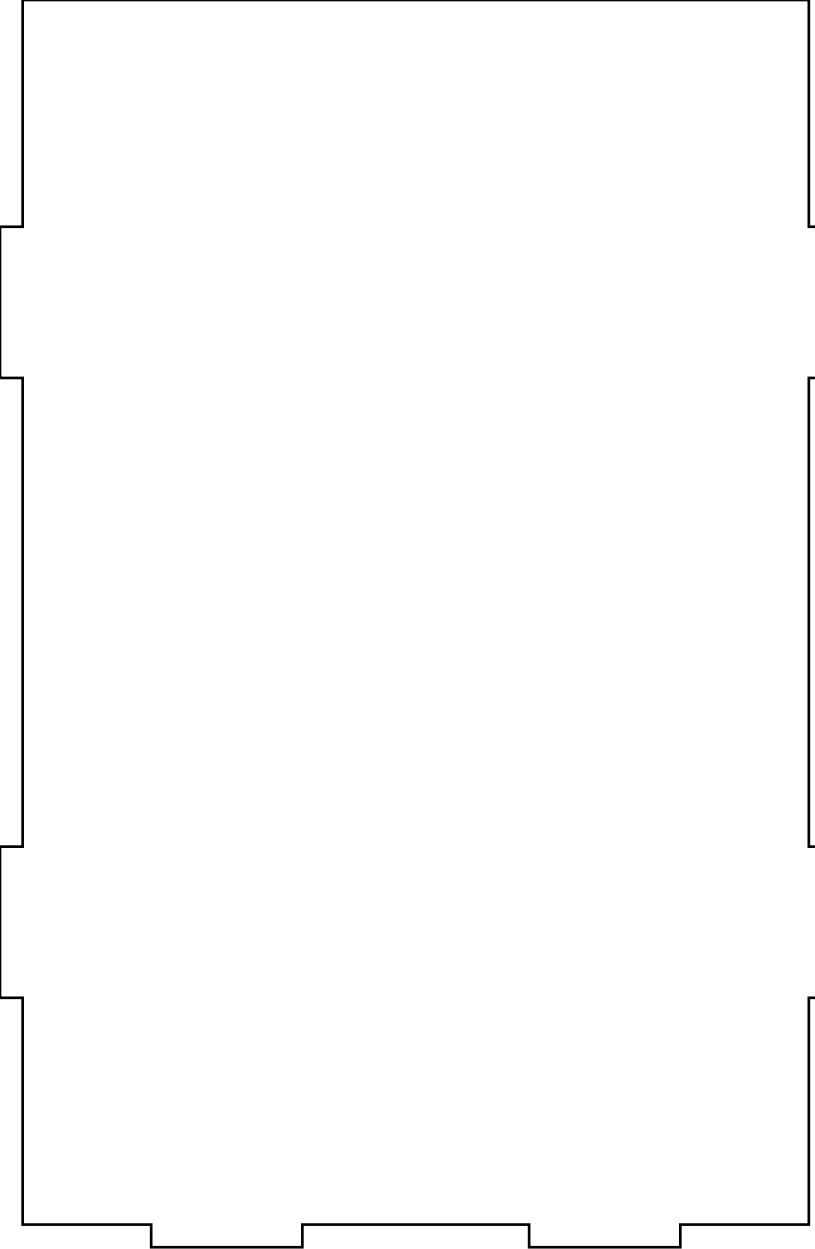
Camera Filter Holder

Black Acrylic (0.118in thick)

Cast Acrylic Sheet, Translucent Black, 12" x 12" x 0.118" Size

<http://a.co/ijNwEoh>

\$12.91



Light Diffuser

White Acrylic (0.236in thick)

Cast Acrylic Sheet, Transparent Light White, 12" x 12" x 0.236" Size

<http://a.co/c7Bewdu>

\$11.18